



ALL IN FOR YOUTH YEAR 7 IMPACT REPORT

Eliminating Barriers to
Educational Success



United Way
Alberta Capital Region



REPORT FOR THE 2022/23 ACADEMIC YEAR

NEEDS & SOLUTIONS

Building stronger futures, one student at a time

Graduating high school sets a strong foundation for a successful and stable future. But too many families experience barriers that make it harder to stay in school.

Success in school is about more than good grades. Healthy relationships with family and friends, secure food and housing, and mental health resources are vital in supporting students on their educational journey.

All in for Youth (AIFY) unites local services and resources to help address the complex needs children and families experience when living with low income. Your support of AIFY helps kids stay in school, increasing high school completion rates and lifting up our entire community.

Thank you for walking alongside local students and their families on the path to educational success.



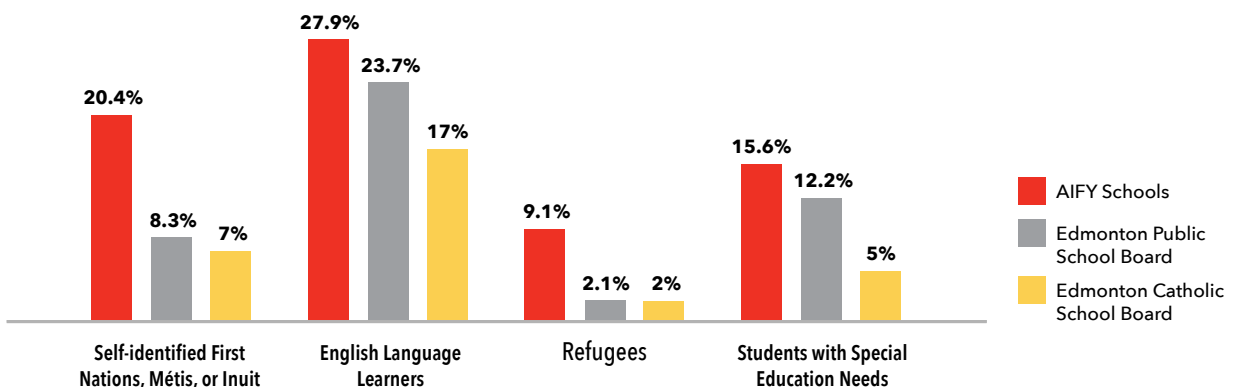
Addressing families' needs

AIFY supports are intentionally located in some of the most diverse and socially vulnerable schools in the Edmonton region. This diversity reflects the different experiences and needs of the students.

Students may face various obstacles to learning, such as language barriers and system navigation for newcomers, mental health issues, experiences of discrimination, and adverse living conditions. These factors can affect a child's ability to learn, build important social skills, and their overall health.

That's why AIFY provides support and resources that are tailored to each child and family. These resources help overcome these barriers, setting up every student for success.

SUB-POPULATION DEMOGRAPHICS, AIFY COMPARED TO DIVISION AVERAGES



Wraparound supports break down multiple barriers

Students and their families can access any number of All in for Youth supports, when they need them. Being able to get support right inside the school breaks down barriers that students and families face to academic success.

Plus, this welcoming and flexible environment means caregivers and families are building stronger connections within the school and becoming more engaged with their child's education. AIFY schools use trauma-informed, strength-based, and resilience-focused practices to foster student and family well-being.

When local students are supported in school and make it to graduation, they see better chances of employment, increased lifetime earnings, and improved outcomes for themselves and future generations.

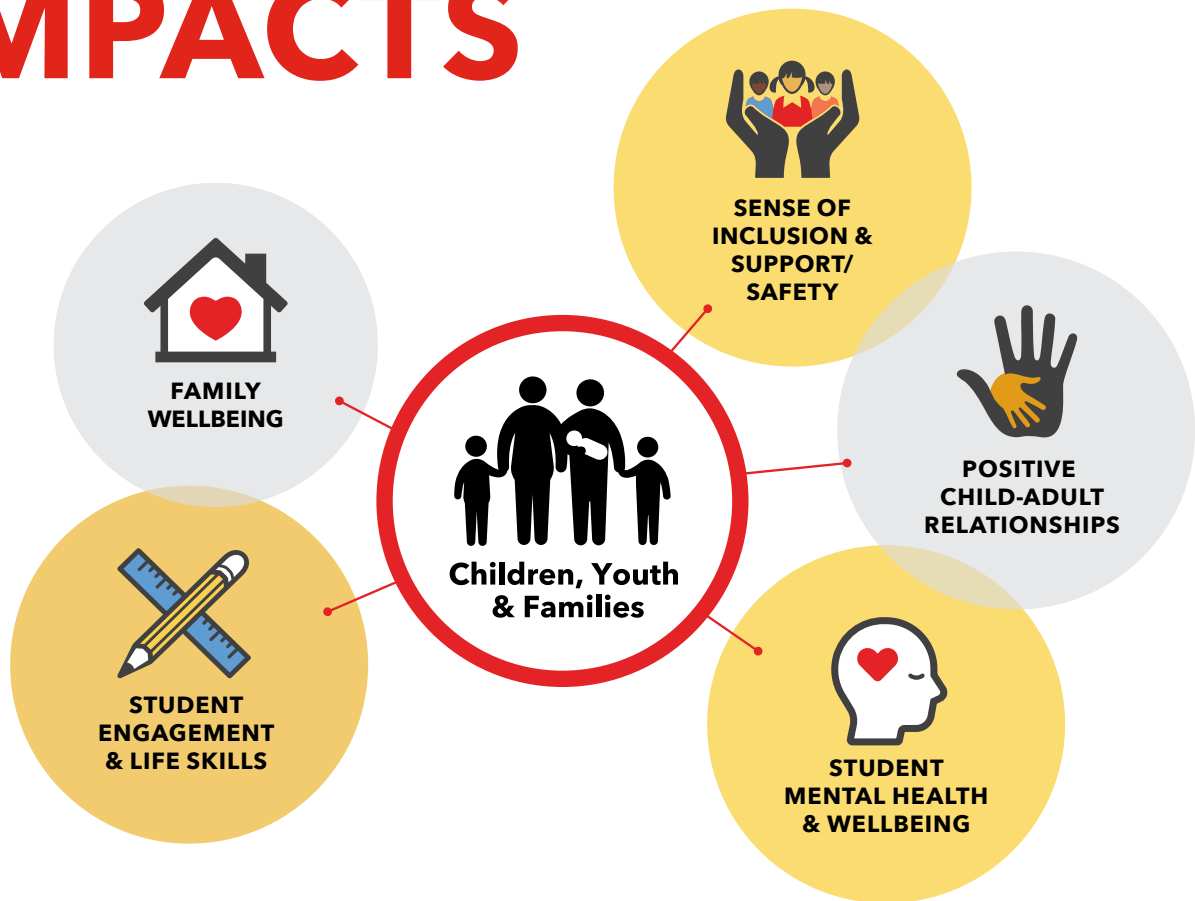


"I'm also amazed by how they communicate with the parents: 'Hey, you know, there's a little bit of concern, can we talk about this? Is there more support we can give her?'"

"We were able to talk it out, figure out what was going on, and then I was able to help my daughter out more too."

– CAREGIVER

IMPACTS



All in for Youth has helped families meet their essential needs like food security, mental health, housing, and out-of-school programming. During the program evaluation process, families shared that they have seen improvements in their family wellbeing and relationships, student mental health and life skills, and their sense of belonging as a result of the support they receive from All in for Youth.

The supportive and inclusive school culture has helped students, and their families feel safe and welcome. Students see AIFY staff as safe, trusted adults they can turn to when needed. The staff provide guidance and perspective, helping students navigate life and academic challenges.

“At OST we gather around, and we just express our thoughts and talk about our feelings and it’s a safe space for us. And if we need some advice from the staff, we would just ask them and they give us really good advice.”

– STUDENT

Accessing AIFY supports has boosted students’ confidence and sense of empowerment. Students also share that they are more engaged in their education and life outside of school, thanks to the social and academic resources such as mentorship, out-of-school time, and success coaching.

“My parents didn’t graduate high school. So as soon as I passed ninth grade, they couldn’t really help me academically with anything. So, I think it was really, really, really imperative to have volunteers and staff through Out-of-School Time that were accessible.

*You know, I’m just gonna walk down the hallway to the library, where I had adults that could help me with my math. I’m not a math person and barely passed math. **But I passed**, because I had these accessible tutors and people who have been through it already to help me with it.”*

– ALUMNUS

All in for Youth’s supports and services have helped students, families, and alumni maintain their mental health and wellness. This whole-family support has reduced stress and improved overall family well-being.

AIFY addresses families’ critical needs through its in-school support model, removing barriers to access such as restrictive criteria, long waitlists, fragmented services, and transportation challenges. Since schools are often located in the same neighbourhood where families live, AIFY allows for easy access to supports. Additionally, when families require supports beyond the scope of AIFY, staff help families to navigate external services, which makes the process easier.



“I don’t think the growth that we’ve seen out of [my son] would be here if these programs weren’t readily available inside the school on a daily basis.”

– CAREGIVER

Families said this support helps reduce the financial burdens and provides emotional relief because they have a safety net of support for their children and family.



BY THE NUMBERS

ALL IN FOR YOUTH 2022/23 IMPACTS



1,993
STUDENTS

and their families accessed
targeted AIFY supports
and services



1,072

STUDENTS/FAMILIES
accessed ongoing, short-term,
or group mental
health support



1,034
STUDENTS

accessed ongoing, short-term,
or group success
coaching



277
STUDENTS

and family members
accessed ongoing, short-term,
or group Roots & Wings
family supports



204,280
MEALS SERVED

throughout the school year
across all 8 schools



718
STUDENTS

participated in
Out-of-School Time
programs

Multiple services meet intersectional needs

About 40% of students accessed more than one targeted All in for Youth service at school. Families may be experiencing challenges that require more than one service type to remove barriers.

"I've been through so many programs, and I've been there, done that. I believe this program, the wraparound, is the only successful program that's out there.

Because it's not one agency working on one thing, it's multiple agencies partnering together, [engaging in] communication... Working with the teacher, working with the school."

– CAREGIVER

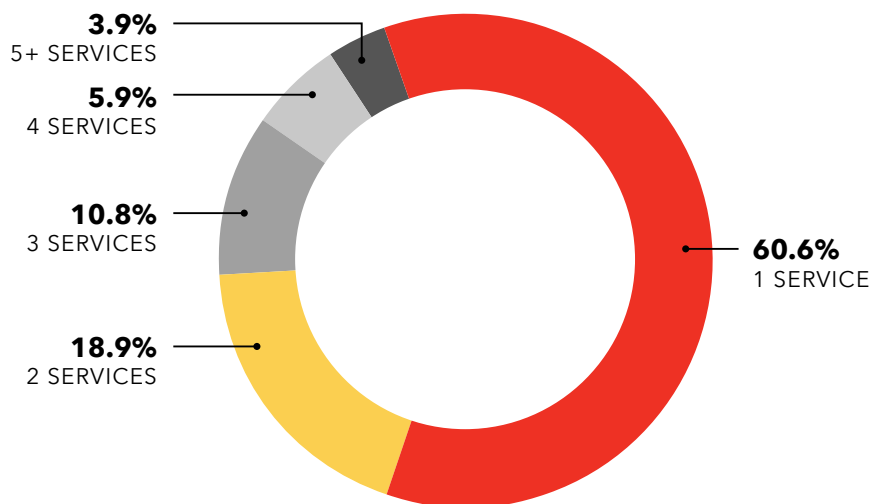
This shows that AIFY's holistic approach is working, and students and families are frequently accessing multiple supports to meet their needs.



288
STUDENTS

supported by a mentor
(school, community,
corporate, staff, or
peer mentor)

USE OF MULTIPLE TARGETED SERVICES



In addition to universally available nutrition supports, students can access additional services to address their needs.

PARTNERS UNITED FOR YOUTH

All in for Youth Schools

In Year 7, **nearly 3,000 students** and their families were part of the eight AIFY school communities. Together, these schools include students from Kindergarten to Grade 12 in Edmonton Catholic and Edmonton Public school divisions.



- | | |
|---|------------------------------------|
| 1 Delton Elementary School | 5 Eastglen High School |
| 2 John A. McDougall Elementary School | 6 Abbott Elementary |
| 3 St. Alphonsus Catholic Elementary/Junior High | 7 Ivor Dent Elementary Junior High |
| 4 Spruce Avenue Junior High | 8 Norwood Elementary |



Program Delivery Partners

All in for Youth is a collaborative of eleven dedicated organizations who come together to provide services, evaluate program outcomes, and steward program impact.

- Boys & Girls Clubs Big Brothers Big Sisters of Edmonton & Area
- City of Edmonton, Family and Community Support Services Program
- Community-University Partnership for the Study of Children, Youth, and Families
- Concordia University of Edmonton
- e4c
- Edmonton Catholic School Division
- Edmonton Public Schools
- Edmonton Community Foundation
- The Family Centre
- REACH Edmonton
- United Way of the Alberta Capital Region

Funding Partners

Systemic change doesn't happen on its own. All in for Youth is grateful for the funding partners who support this innovative and life-changing work.

- Butler Family Foundation
- Boys & Girls Clubs Big Brothers Big Sisters of Edmonton & Area
- City of Edmonton, Families and Community Support Services
- Edmonton Community Foundation
- EPCOR
- The Family Centre
- The Melton Foundation
- Newell Family
- RBC Foundation
- RunWithIt Synthetics
- Sofina Foundation
- Scotiabank
- The Stollery Charitable Foundation
- United Way of the Alberta Capital Region

ALL IN FOR YOUTH STRENGTHENS OUR COMMUNITY

Because of supporters like you, students and families are creating positive change in their lives – and it's making a difference in the broader community, too.



Greater resiliency, hope, positive relationships, self-esteem, and social networks.



Stronger, healthier, and thriving communities.



Improved school performance, wellbeing, and sense of belonging.



Help give kids equal access to essential resources that help them thrive in school and in life.

Scan here to learn more about All in for Youth.

15132 Stony Plain Road
Edmonton, AB T5P 3Y3
Tel. 780-990-1000
www.myunitedway.ca
Charitable Registration #11926 0487 RR 0001

Follow us on social @myunitedway



United Way
Alberta Capital Region