



ALL IN FOR YOUTH

YEAR 8 IMPACT REPORT



United Way
Alberta Capital Region



REPORT FOR THE 2023/24 ACADEMIC YEAR

HELPING STUDENTS TODAY FOR STRONGER COMMUNITIES TOMORROW

More local students are staying in school and graduating because of All in for Youth.

After eight years, the results are becoming clear: when families get help to meet their needs, students come to school. When youth come to school with a caring team that supports them, they stay in school. And when students stay in school, they graduate.

Graduating high school isn't just an academic achievement. This important milestone sets a strong foundation for a stable future. These individual impacts ripple out into the wider community and across generations, creating a community where everyone can thrive.

But too many students and their families experience barriers that make it harder to stay in school. That's why All in for Youth (AIFY) unites local experts, resources, and supports right inside our neighbourhood schools.

By helping students overcome challenges related to mental health, academic success, and family stability, they are empowered to build stronger futures for themselves and their families.



Led by United Way of the Alberta Capital Region, AIFY is a collaborative of schools, front-line agencies, and sector experts. This coordinated, community-driven approach is helping to create lasting change by ensuring that vulnerable youth receive the support they need—right where they need it most.

While we're thrilled to know that AIFY is working, we can't lose momentum. United Way is focused on ensuring this life-changing collaborative can continue to help students and their families thrive, and we need your support.

Thank you for walking alongside All in for Youth students and their families on their road to educational success.

Breaking down barriers

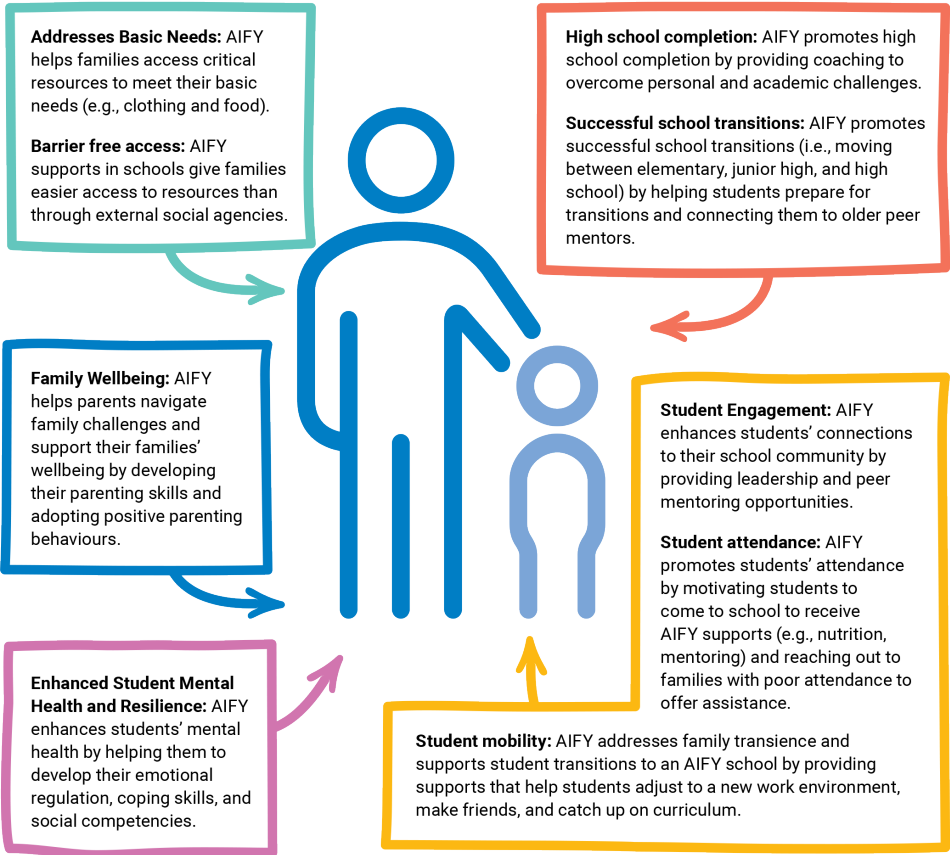
All in for Youth supports are intentionally located in some of the most diverse and socially vulnerable schools in the Edmonton region.

Students may face various obstacles to learning, such as language barriers and system navigation for newcomers, mental health issues, experiences of discrimination, and adverse living conditions.

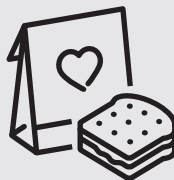
With AIFY, students and their families can access any number of supports, right inside the school. This ease of access breaks down barriers that students and families face to academic success.

The integrated service model eliminates transportation costs, exclusionary criteria, and wait times that families might face when seeking assistance through external social agencies.

AIFY families can connect with a support worker or mental health staff to navigate challenges. Caregivers say that this support helps them to develop parenting skills, adopt and model positive behaviours, and support their families' overall wellbeing.



Wraparound supports available in AIFY schools include:



Nutrition supports



Out-of-school-time programming



Child and family mental health therapy



Mentoring



Success coaching



Roots and Wings in-home support

Last school year, almost all AIFY students accessed nutrition support, while 50% took part in at least one other service.

This shows that AIFY's holistic approach is working — students and families are empowered to access supports that will help meet their needs.

EMPOWERING STUDENT SUCCESS



BY THE NUMBERS: For every one-percentage point increase in average attendance, the odds of AIFY students graduating high school increased by 7.1%.



Thanks to data collected over the last eight years, we're seeing clear evidence that All in for Youth is working to increase school completion rates.

This collaborative in-school model engages students so they attend school consistently, supports their academic and social growth so that they stay in school, and empowers the entire family along the road to graduation.

Students come to school

BY THE NUMBERS: AIFY contributes to a strong attendance rate of 81.4%, just below last year's division average. This is significant positive growth for schools with high vulnerability.



Many students face challenges when it comes to getting engaged in school, making friends, and feeling like they belong. AIFY helps students build and strengthen these connections within their school community.

Through Out-of-School Time (OST) and mentoring, students have opportunities to build friendships and engage in leadership activities.

Students can access mental health supports and success coaches to help them navigate difficult relationships. Connecting with a success coach also helps students feel a greater sense of belonging.

Support workers proactively reach out to families of students with low attendance, offering assistance and resources to encourage consistent participation.

Having this program gives us some really huge relief. The parents don't have to struggle as much.

- Caregiver

Students stay in school



BY THE NUMBERS: Last year, 91% of AIFY elementary students and 84% of AIFY junior high students successfully transitioned to the next level of school within Edmonton Public Schools.

My kids are in Grade 6, and All in for Youth has been really great with supporting the kids transitioning into junior high.

- Teacher

AIFY is available at schools in highly socially vulnerable neighbourhoods, where families may be more mobile. This means students are more likely to switch schools before completing the school level, or change school divisions for the next level of education. Because of this mobility, divisions are unable to track students who successfully transition but enroll in a different division.

AIFY promotes successful school transitions — moving between elementary, junior high, and high school — by helping students prepare for what to expect in upcoming school transitions and connecting them to older peer mentors.

Success coaching and OST help students transition into an AIFY school, adjust to their new environment, make friends, and catch up on curriculum.

Students graduate

BY THE NUMBERS: 61.6% of students who spent three or more years in AIFY schools completed high school, a 27.4% increase compared to students with similar social demographics.



All in for Youth is empowering students to progress through school and achieve success.

AIFY helps students complete high school by providing tutoring, success coaching, and family support to overcome personal and academic challenges, enabling students to stay on track to complete their education.

Targeted AIFY supports help students develop both academic and personal skills. OST programming and mentoring offer crucial learning and social support; success coaches assist students with goal setting, building resiliency, and academic support.

Data shows that years spent in an AIFY school is a significant predictor of high school completion. For all measures of high school completion, the proportion of students completing high school in AIFY schools has steadily increased over the years.



PARTNERS UNITED FOR YOUTH

In Year 8, more than 3,000 students and their families were part of eight AIFY school communities. Together, these schools include students from Kindergarten to Grade 12 in Edmonton Catholic and Edmonton Public school divisions.



Years the Schools joined the Initiative: ● 2016 ● 2021

- Abbott Elementary (Kindergarten – Grade 6)
 - Delton Elementary (Kindergarten – Grade 6)
 - Eastglen High School (Grade 10 – Grade 12)
 - John A. MacDougall Elementary (Kindergarten – Grade 6)
- Ivor Dent Elementary/Junior High (Kindergarten – Grade 9)
 - Norwood Elementary (Kindergarten – Grade 6)
 - Spruce Ave Junior High (Grade 7 – Grade 9)
 - St. Alphonsus Catholic Elementary/Junior High (Kindergarten – Grade 9)

All in for Youth is a collaborative of eleven dedicated organizations who come together to provide services, evaluate program outcomes, and steward program impact:

- BGC Big Brothers Big Sisters of Edmonton & Area
- City of Edmonton, Family and Community Support Services Program
- Community-University Partnership, University of Alberta
- Concordia University of Edmonton
- e4c
- Edmonton Catholic School Division
- Edmonton Public Schools
- Edmonton Community Foundation
- The Family Centre
- REACH Edmonton
- United Way of the Alberta Capital Region



Systemic change doesn’t happen on its own. All in for Youth is grateful for the funding partners who support this innovative and life-changing work:

To United Way and the donors, I just want to say: you are helping students to actualize their dreams.
- AIFY school administrator

- Anonymous Donor
 - Butler Family Foundation
 - BGC Big Brothers Big Sisters of Edmonton & Area
 - City of Edmonton, Families and Community Support Services
 - Edmonton Community Foundation
- EPCOR
 - The Family Centre
 - Newell Family Foundation
 - Peter Gilgan Foundation
 - RBC Foundation
 - Sofina Foundation
 - Scotiabank
 - United Way of the Alberta Capital Region

ALL IN FOR YOUTH HELPS US ALL THRIVE

Because of supporters like you, All in for Youth students and families are creating meaningful change in their lives—building stronger communities for all of us.

When we invest in early and wraparound supports, we create more opportunities for young people to thrive at school, at home, and into adulthood. While every path is different, these supports help eliminate barriers, increase the likelihood of positive outcomes, and reduce the need for more costly interventions down the road. This impact ripples out to foster a more connected and thriving region where no one is left behind.

Together, we're creating the conditions for brighter futures.



*Greater resiliency, self-esteem,
and positive relationships.*



*Stronger, healthier, and
thriving communities.*



*Improved school performance,
wellbeing, and belonging.*



Help give kids equal access to essential resources that help them thrive in school and in life.

Scan here to learn more about All in for Youth.

15132 Stony Plain Road
Edmonton, AB T5P 3Y3
Tel. 780-990-1000
www.myunitedway.ca
Charitable Registration #11926 0487 RR0001



United Way
Alberta Capital Region