

ALL IN FOR YOUTH

# Year 9 Impact Report



United Way  
Alberta Capital Region



REPORT FOR THE 2024/25 ACADEMIC YEAR



# Needs & Solutions

## BUILDING STRONGER FUTURES, ONE STUDENT AT A TIME

Graduating high school sets a strong foundation for a successful and stable future. But too many students experience barriers that make it harder to stay in school.

Success in school is about more than good grades. Healthy relationships with family and friends, secure food and housing, and mental health resources are vital.

All in for Youth (AIFY) unites local services and resources to help address the complex needs children and families experience when living with low income. Your support of AIFY helps kids stay in school, increasing high school completion rates and lifting up our entire community.

Thank you for walking alongside local students and their families on the path to educational success.

### Addressing families' needs

All in for Youth supports are intentionally located in some of the most diverse and socially vulnerable schools in the Edmonton region. This diversity reflects the different experiences and needs of the students.

All in for Youth schools are strategically picked so that students are able to have supports delivered throughout their entire academic journey, from elementary through to high school.

Students may face various obstacles to learning, such as language barriers and system navigation for newcomers, mental health issues, experiences of discrimination, and adverse living conditions. These factors can affect a child's ability to learn, socialize with their classmates, and their overall health.

That's why AIFY provides support and resources that are tailored to each child and family. These resources help overcome these barriers, setting up every student for success.

## Wraparound supports break down multiple barriers

Students and their families can access any number of All in for Youth supports, when they need them. Being able to get support right inside the school breaks down barriers that students and families face to academic success.

### Wraparound supports provided by AIFY include:

#### NUTRITION SUPPORT



#### MENTORING & CAREER READINESS



#### BEFORE & AFTER SCHOOL PROGRAMS



#### MENTAL HEALTH & WELL-BEING



#### SUCCESS COACHING



#### FAMILY SUPPORT SERVICES

Plus, this welcoming and flexible environment means caregivers and families are building stronger connections within the school and becoming more engaged with their child's education. AIFY schools use trauma-informed, strength-based, and resilience-focused practices to foster student and family well-being.

When local students are supported in school and make it to graduation, they see better chances of employment, increased lifetime earnings, and improved outcomes for themselves and future generations.

*"I feel like I have the supports I need to be a better parent and it's not so frustrating and you don't feel so alone."*

– PARENT

# Impacts

All in for Youth has helped families meet their essential needs like food security, mental health, housing, and after-school care. During the program evaluation process, families shared that they have seen improvements in their family wellbeing and relationships, student mental health and life skills, and their sense of inclusion as a result of the support they receive from All in for Youth.

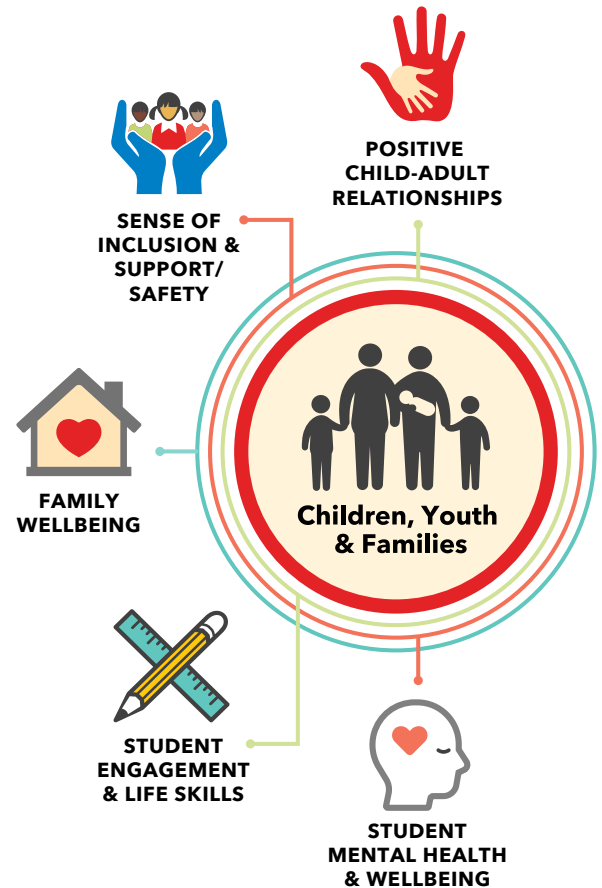
*"The only reason I come to school is for this group on Tuesdays [Success Coach Group]." – STUDENT*

*"Making friends at OST helps with wanting to go to school" – STUDENT*

Accessing All in for Youth supports has boosted students' confidence and sense of empowerment. Students are more engaged in their education and life outside of school, thanks to the social and academic resources like mentorship, out-of-school time, and success coaching.

*"I don't think people realize how not having All in for Youth in school is negatively impacting the youth. When I needed to drop out of school, I really thought there was no other option. I feel that having All in for Youth in schools would create a safety net. That would catch all the kids that are falling through the cracks. It's so much harder to get your life together as an adult who's had such a hard, whole upbringing. And if you can have someone catch you before you fall from the very start it can change everything." – AIFY ALUMNI*

*"It's part of the culture of the school so there's not a stigma or anything to getting help... I think it also helps normalize like it's okay to get support. Like people do it all the time. It's just, it helps to stay healthy. You don't have to do the journey alone." – STUDENT*



AIFY addresses families' critical needs through its in-school support model, removing barriers to access such as restrictive criteria, long waitlists, fragmented services, and transportation challenges. Additionally, when families require supports beyond the scope of AIFY, staff help families to navigate external services, which makes the process easier.

*"I don't think the growth that we've seen out of [my son] would be here if these programs weren't readily available inside the school on a daily basis." – CAREGIVER*

Families said this support helps reduce the financial burdens and provides emotional relief because they have a safety net of support for their children and family.

# By the Numbers

AIFY 2024/25 impacts:

**3,598** STUDENTS  
AND THEIR FAMILIES  
accessed targeted AIFY supports and services.

**1,940 STUDENTS**  
*proactively accessed at least  
one or more AIFY supports.*

**79% OF**  
**STUDENTS**  
enrolled in mental health therapy  
experienced improvement.

**More than 211,000 meals** and nearly  
**15,000 snacks** were served throughout the  
school year **ACROSS ALL 8 SCHOOLS**, including  
after school and during school breaks.

Students with 3 or more years of experience in AIFY saw a  
**27.4% INCREASE** in graduation  
rates  
compared to those with similar social demographics.

Schools participating in AIFY were  
able to **increase attendance  
rates to 81.4%.**

## Multiple services meet intersectional needs

About 54% of students accessed one or more targeted AIFY service at school. Families may be experiencing challenges that require more than one service type to remove barriers.

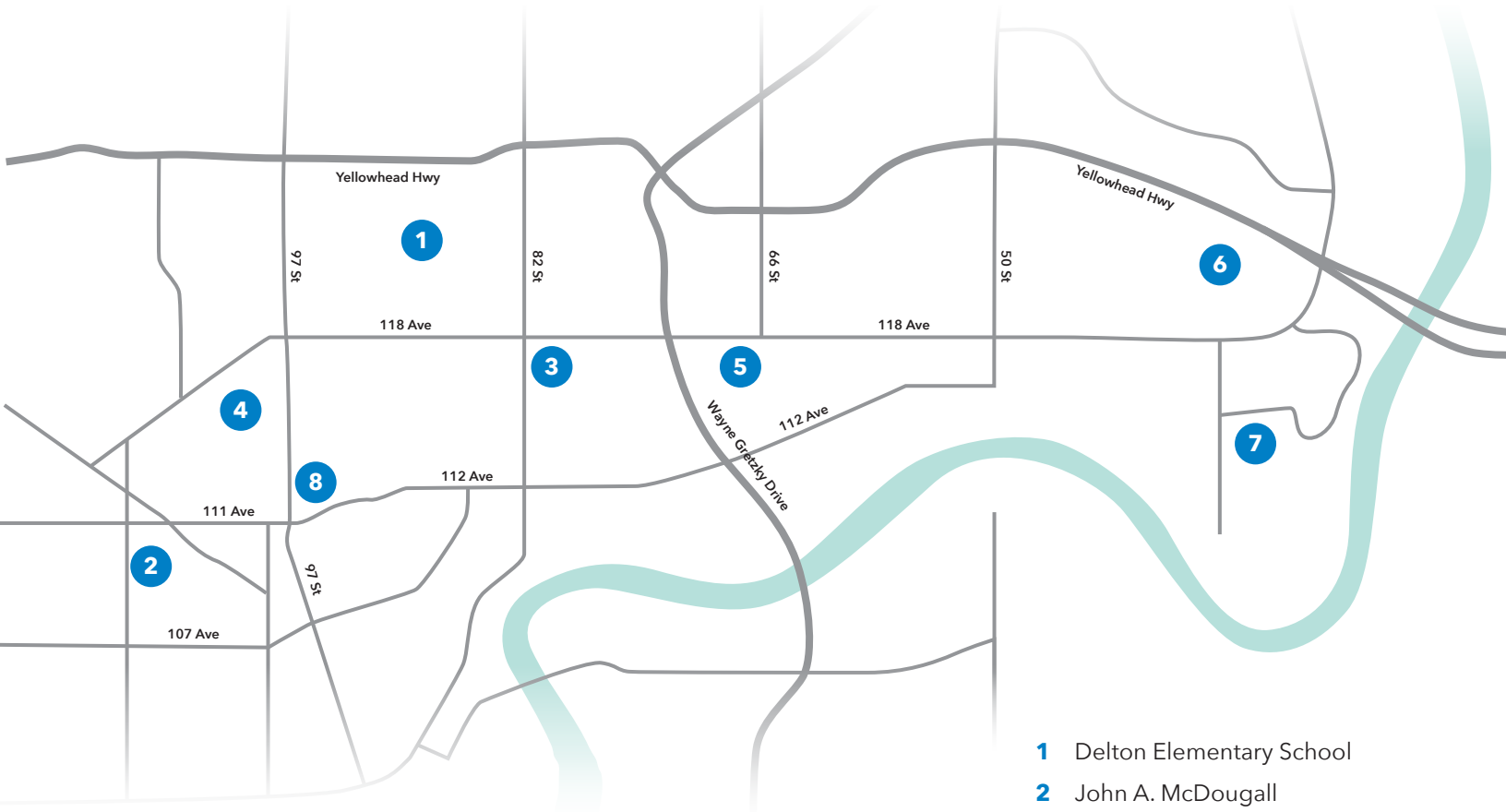
This shows that AIFY's holistic approach is working, and students and families are frequently accessing multiple supports to meet their needs.

*"I've been through so many programs, and I've been there, done that. I believe this program, the wraparound, is the only successful program that's out there... Because it's not one agency working on one thing, it's multiple agencies...partnering together, [engaging in] communication...Working with the teacher, working with the school." – PARENT*

# Partners United for Youth

## AIFY Schools

In Year 9, nearly 3,600 students and their families were part of the eight AIFY school communities. Together, these schools include students from Kindergarten to Grade 12 in Edmonton Catholic and Edmonton Public school divisions:



- 1 Delton Elementary School
- 2 John A. McDougall Elementary School
- 3 St. Alphonsus Catholic Elementary/Junior High
- 4 Spruce Avenue Junior High
- 5 Eastglen High School
- 6 Abbott Elementary
- 7 Ivor Dent Elementary Junior High
- 8 Norwood Elementary





## Partners

All in for Youth is a collaborative of eleven dedicated organizations who come together to provide services, evaluate program outcomes, and steward program impact.

- BGC Big Brothers Big Sisters of Edmonton & Area
- City of Edmonton, Family and Community Support Services Program
- Community-University Partnership, University of Alberta
- Concordia University of Edmonton
- e4c
- Edmonton Catholic School Division
- Edmonton Public Schools
- Edmonton Community Foundation
- The Family Centre
- REACH Edmonton
- United Way of the Alberta Capital Region

## Funders

Systemic change doesn't happen on its own. All in for Youth is grateful for the funding partners who support this innovative and life-changing work.

- Anonymous Donor
- Butler Family Foundation
- BGC Big Brothers Big Sisters of Edmonton & Area
- City of Edmonton, Families and Community Support Services
- CN
- e4c
- Edmonton Community Foundation
- EPCOR
- Intact Financial Corporation
- The Family Centre
- The Melton Foundation
- Newell Family
- Peter Gilgan Foundation
- RBC Foundation
- Sofina Foundation
- The Stollery Charitable Foundation
- TD Bank Group
- United Way of the Alberta Capital Region

# All in for Youth STRENGTHENS OUR COMMUNITY

Because of supporters like you, AIFY students and families are creating positive change in their lives - and it's making a difference in the broader community, too.



*Greater resiliency, hope, positive relationships, self-esteem, and social networks.*



*Stronger, healthier, and safer communities.*



*Improved school performance, safety, and physical and mental health.*



Help give kids equal access to essential resources that help them thrive in school and in life.

**Scan here to learn more about All in for Youth.**

15132 Stony Plain Road  
Edmonton, AB T5P 3Y3  
Tel. 780-990-1000

[www.myunitedway.ca](http://www.myunitedway.ca)

Charitable Registration #11926 0487 RR 0001



**United Way**  
Alberta Capital Region